

## Surface Preparation

### TECHNOCLIN

TECHNOCLIN is a mould and mildew stain remover, it is formulated specifically for water damage restoration and mould remediation projects where mould, mildew and other microbial growth have impacted building materials. TECHNOCLIN utilizes special surfactants and oxygen incinerating chemicals to aggressively remove tough biological stains from porous, semi-porous, and non-porous materials. When applied, the proprietary formula creates deep-cleaning foam that breaks apart contamination, lifting and flushing it from the surface, while penetrating into the surface to oxidize and remove organic stains. Once the cleaning and bleaching action has finished, TECHNOCLIN decomposes into water, leaving no chemical residues to clean up.

### Benefits

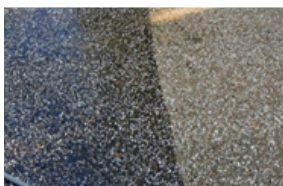
- Easy-To-Use
- Fast acting
- Neutral pH safe for most surfaces\*
- Up to 100 square feet/Lit coverage rate
- 3-year shelf life
- For residential-commercial-industrial use

\*Not recommended for aluminium, copper or brass

### Applications

**Here are some of the places where TECHNOCLIN can be used**

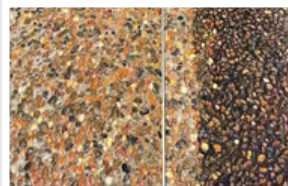
- Attics
- Brick
- Cinder block
- Concrete
- Crawl spaces
- Ductwork
- Fiber glass
- Floor Joists
- Framing
- Gypsum board
- Lumber/wood
- Metal
- Painted walls
- Stucco
- Studs/Seal plates
- Subfloors
- Trusses
- Wall cavities



TECHNOCLIN on sealed surface



TECHNOCLIN on exposed grain



TECHNOCLIN on pebble seal