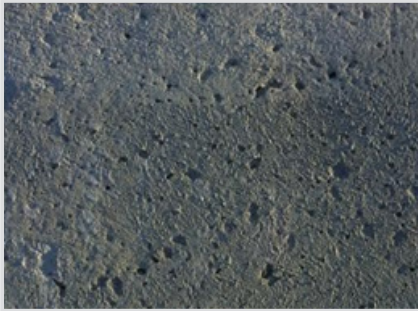


CONCRETE POLISHING FOR WEATHERED FLOORS

Rain Damaged Concrete

PROTEX C

SILKOTE S is applied at a rate of 50 square feet per Kg. SILKOTE S is allowed to soak into the concrete floor for 30 minutes. Any puddles formed is removed and allowed to dry. A second application of PROTEX C is applied at a rate of 150 square feet per Kg and allowed to dry for 24 hours. Subsequently, TECKROCK ASSIST is applied to the concrete at a rate of about 100 square feet per Kg. While the concrete is still damp, a rotary polishing machine is used to polish the concrete. This polishing step is then repeated by using higher grit polishing discs on each occasion. The result is a hardened concrete surface having a very high sheen finish.



Carbonated Concrete

PROTEX C

PROTEX C is applied at the rate of 25 square feet per Kg. PROTEX C compound is allowed to soak into the concrete for 30 minutes. Any puddles formed is removed and allowed to dry completely. A second application of PROTEX C is applied at a rate of 150 square feet per Kg and allowed to dry for 24 - 48 hours. Subsequently, TECKROCK ASSIST is applied to the concrete at a rate of about 100 square feet per Kg. While the concrete is still damp, a rotary polishing machine is used to polish the concrete. This polishing step is then repeated by using higher grit polishing discs on each occasion. The result is a hardened concrete surface having a very high sheen finish.

